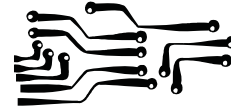


# TotalSecure™ Accessories

## Alarm & PTZ Controller Interfaces

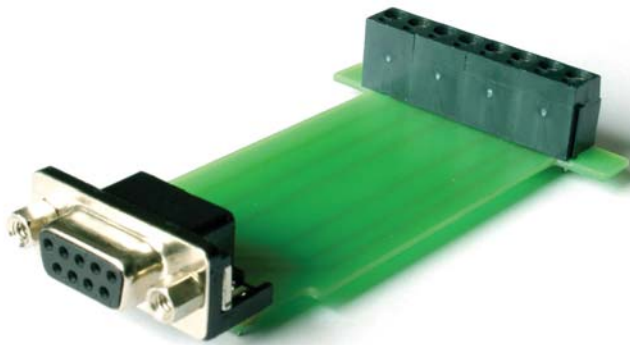
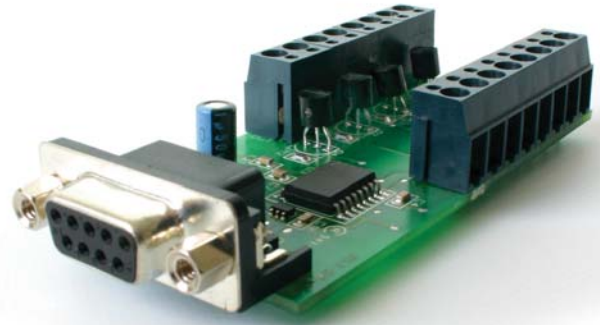
### Alarm Input/Output Interface



Part Number: PRC-CONTACT-I/O

#### Features/Specs

- 4 alarm inputs - to be connected to dry inputs
- 4 alarm outputs - to be connected to open collectors
- Serial port interface
- No external power required!
- Small footprint
- For Totalsecure Series DVRs



### Alarm Input Interface

Part Number: PRC-CONTACT

#### Features/Specs

- 4 alarm inputs - to be connected to dry inputs
- Serial port interface
- No external power required!
- Small footprint
- For Totalsecure Series DVRs

### PTZ Controller Interface

Part Number: PRC-PTZ-INT

#### Features/Specs

- PTZserial interface for one or more PTZ cameras
- RS-232 to RS-485/422 interface
- Includes 9VDC power supply
- Serial extension cable included
- Solid compact unit

