

Quick Install Guide

*** AVOID CELERON and AMD PROCESSORS with cards higher than 30 fps **

We use Asus motherboards in our systems, P4P800E DX & P4P-800-VM & P5GDC & P5 LD2/ P5 LD2-VM, P5-LM-X. Suggest you use 1 or 2GB DDR (DDR2) memory for 120 fps products and higher.

Thank you for your purchase of the **TotalSecure DVR**. Browse your CD for the PDF format **TotalSecure DVR** manual and guides for full details.

Quick Install Steps:

Windows Prep.

- i) Install **Windows XP Home, XP or 2000 Professional, or VISTA**
(*Media Edition requires some WDM drivers be disabled in your Device Manager>Sound Game and Video Controllers Section**)
- ii) Ideally partition a c:/ drive for the operating system
(suggest 20 GB or separate 80 GB drive for Windows and temporary video clip backup). Format the remaining drives d:/, e:/, etc..



If drive c:/ is the only drive available on your system – ALL IS OK if the available drive space is 10GB or more. Systems must have 10 GB or more drive space available from version 2.4.8 to capture video. Proceed below.

Consult the XP Staging, and other manuals on the CD(/Manuals) for a complete XP Operating System Checklist.

Card Install

On a Windows 2000, XP or * VISTA based system (also requires Indeo codec update):

- i) Remove your PC's cover, and insert your capture card(s)
- ii) Power your PC. During the Windows boot you will be prompted to install the capture card drivers.

To load the drivers (For * VISTA, manually point to the driver location on the CD for your model capture card).

Option A (all current cards except PRC-1016-120 with 2000!)

Ignore the New Hardware Found Prompt (NOTE: there will be “x” video and “x” audio prompts to cancel if you choose to do that – per card)

Insert the **TotalSecure DVR** CD and browse the CD. Driver location ex., d:/capturedrivers, where d is the CD. Double click the Driver installation utility called **capturecarddriver.exe**. Select “Install” and then select the image that matches your card installed in your system (and/or match the model #).

You may need to change your Device Manager “Driver Signing”, found under System>Hardware>Device Manager Driver Signing button = Set it to “Ignore” and Save. The retry the driver utility.

Option B (including TS8K, TS16K)

Follow the New Hardware Found Wizard and manually point to the correct Folder on the TotalSecure CD, “CaptureCardDriver” folder and Model # folder of your card, ex., “TS4K, TS4KPRO, TSUltra16K”. Complete this step for each wizard generated by Windows.

Note for PRC-TS-Ultra16K users:

For PRC-TS-Ultra16K capture card(s) select the model and image indicating PRC-1004-30 or PRCTS4K (either driver will work with TS-Ultra16K model)

Note for Windows 2000 USERS using PRC-1016-120 and PRC-1004-120

When prompted for drivers by Windows, point to location d:/capturedrivers/prc-1016-120/, where d is the CD.

Select OK for the only choice on the menu.

Repeat this for all prompts by Windows 4 for video and 4 for audio (8 total for each card). Be sure to select “Continue Anyway” if XP questions the install. Continue until the “Successful Message” appears.

NOTE: Continue until the “Successful Message” appears.

Note for USERS using 16/32 Inputs (1 or 2 x PRC-1016-120 or 2 x PRC-1004-120)

If TotalSecure displays the same camera on multiple inputs (i.e., camera 5 on inputs 5,6,7,8), close TotalSecure, browse the CD and point to your CD location d:/capturedrivers/prc-1016-120, PRC-1004-120/, where d is the CD. Look for **Calibrate.exe**. Run this application to Re-Map your video inputs and then re-launch TotalSecure. All will be functional once the re-mapping is done.

Option C (including TS8K, TS16K)

Cancel the New Hardware Found messages. Manually point to the Older Driver Setup Wizards on the CD under CaptrueCardDrivers. Use DriverUtilityV2.exe or DriverUtilityV2A.exe and choose the correct model, TS8K or TS16K, etc..

TO Remove PRIOR Capture Card Drivers or Drivers Installed In Error

Click **capturecarddriver.exe** and choose the Remove Option if any prior cards where accidentally or previously installed (DO NOT USE with Win 2000)

You may need to change your Device Manager “Driver Signing”, found under System>Hardware>Device Manager Driver Signing button = Set it to “Ignore” and Save. The retry the driver utility.

Installing TotalSecure Application

If upgrading from a prior version , If not, Skip to Step vii):

- iii) Close hsdb.exe from the task bar, if running (right click and exit).
- iv) Close ListIp.exe from the task bar, if running (right click and exit).

If Upgrading from Version 2.4 or later, proceed to Step vii)

If upgrading from Version(s) 2.3x or earlier, go to step v)

- v) Delete all Data folder, for example C:/TotalSecure Data, d:/, etc..
- vi) Delete the entire folder, c:/Program Files/**Productive Consultants**

If the Software Watchdog was previously running, you will need to close it in TotalSecure (or manually close srv.exe from the task manager – Processes).

Installing TotalSecure:

- vii) To install the application, insert the CD and launch the **TSSetup** icon/file.
- viii) Follow the on-screen instructions until complete.
- ix) Current update available is 2.4.8. Copy and replace the TotalSecure.exe file under c:/Program Files/Productive Consultants/TotalSecure with the file found on the CD drive under the folder “248 Update”
- x) Launch the **TotalSecure DVR Application via the icon or (Start-Run-Startup) or (Start–Run-TotalSecure)**
 - Default login for the DVR is ‘admin’
 - Default password for the DVR is ‘admin’

DISABLE any cameras not connected to your system! (Find under Camera Setup)

DURING INITIAL CAMERA Installation and setup, it is suggested to Toggle the “Suspend Capture” (depress then click again). This will refresh the camera screens and show camera images where blue screens may have appeared due to the Video Loss feature of TotalSecure.

VISTA Users must install the Indecodec update (exe file found on the CD under the folder “Codec”). Install on both the TotalSecure recording PC and any Vista based remote PC’s.

Remote Internet Connectivity:

Minimize or close the **TotalSecure DVR** application.
 Launch Internet Explorer to confirm that an Internet connection is available. Once successful, close Internet Explorer.

For either Internet or LAN connections, default remote Internet access
 Login: admin Password: admin

Recommended to fix your DVR's IP address behind the router (make static, not automatically assigned). This will ensure the port forwarding settings remain even after power losses, etc..

If viewing via LAN:

- i) Install NetViewer ONLY from the TotalSecure Wizard on the CD on the remote computer(s) (/NetViewerSetup.exe).
- ii) Type in the LAN IP address of the DVR system, and create a Desktop shortcut
- iii) Click on the shortcut to connect to your DVR over the LAN

To access this unit via the Internet using Dynamic IP's (changing IP's):

- i) Find ListIP (listip.exe) in c:/program files/ productiveconsultants/totalsecure
- ii) Be sure to put this file in your Windows startup
- iii) Edit the ListIp configuration (find it in the task bar when launched, right click the icon and go to configuration). Consult the manual to fill in any areas where you may need assistance and call 1-888-365-4706 for your specific Usernames and Passwords and for any other assistance.
- iv) Right click the Listip icon and "Upload now" (this tests that your configuration settings and ftp site are working)

To access this unit via the Internet using STATIC IP's (fixed WAN IP):

- i) Install Netviewer per instructions above on any remote (non-camera computer that is not on the local network, for example, Home PC to view office, office PC to view home, etc.. BUT use the WAN IP of the location where the TotalSecure DVR is located.
- ii) Or use the free TotalSecure Services and inform TotalSecure of the Static IP address of your site, phone 1-888-365-4706.

For WAN Connections, IF THE DVR SYSTEM IS BEHIND A ROUTER

- 1) Be sure to port forward the router to the DVR's IP address.
- 2) Forward ports 6000 to 6300 (specifically 6100,6101, 6150, 6151) to the IP address of the DVR (5900 for VNC also).
- 3) Often to talk to the router, use Internet Explorer and type in the address bar 192.168.1.1, or...0.1
- 4) Enter the router login and password, can typically use admin as the password and leave the login blank.
- 5) Find the tab and locations for Forwarding, usually found in the Advanced Settings and follow the router instructions.

YOU MUST USE VERSION 2.3.7_2 or higher with the PRC-1008-240 Capture Card from TotalSecure (Recommend using TotalSecure 2.48 for all models of capture cards)

Consult the CD for Manuals, Setup Guides, XP Configurations, XP Staging Tips, VNC Setup Guide and more details...

Visit www.totalsecure.ca for updates, downloads and more.....



Initial PC Setup

We recommend the creation of a operating system drive only, c:/ and approx 15 GB, for Windows and the applications to be stored too. IT IS NOT a requirement, but a suggestion if the PC is not already formatted, etc..

The balance of the storage drives used by TotalSecure should be set up with the following:

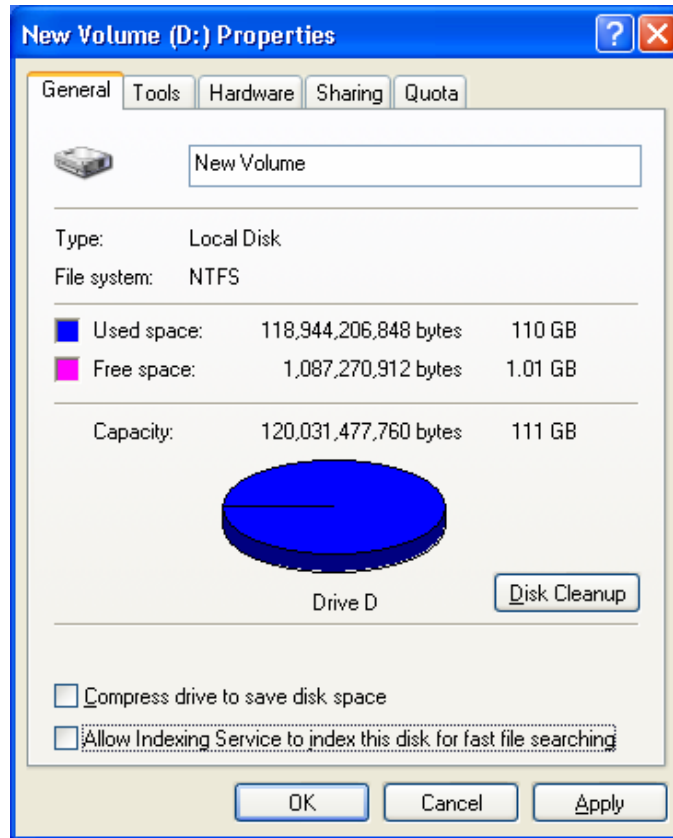
BE SURE TO SET THE PC'S BIOS TO AUTOMATICALLY START UPON AC-POWER RESTORE.

Configuring the Storage Drives

All storage drives used by TotalSecure should be set up with the following configurations. To make the drive configuration changes follow the steps below.

Double-click on My Computer. Right-click on the first storage drive and select Properties. Under the General tab, deselect the “**Allow Indexing Service to index this disk for fast file searching**” checkbox. Click on OK to save the settings and close the properties window.

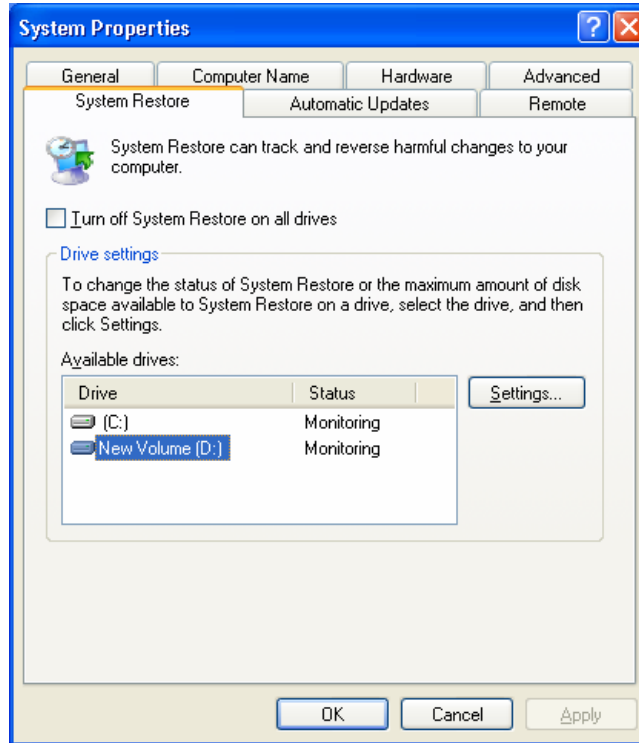
 You must follow the above steps for each storage drive.



Once all drives are complete, close the My Computer window.

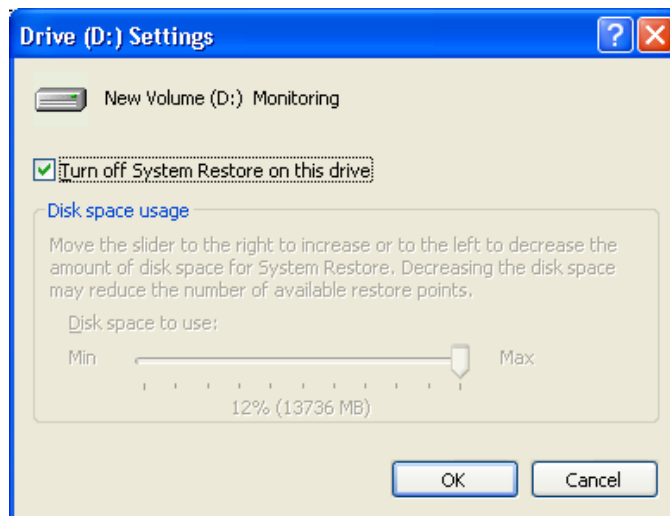
System Restore

Right-click on My Computer and select Properties. In the System Properties window, select the System Restore tab. Select the first storage drive and click on Settings.



Select the **“Turn off System Restore on this drive”** checkbox. Click on OK in the settings window. Click on OK in the System Properties to close the window and save the settings.

 You must follow the above steps for each storage drive.

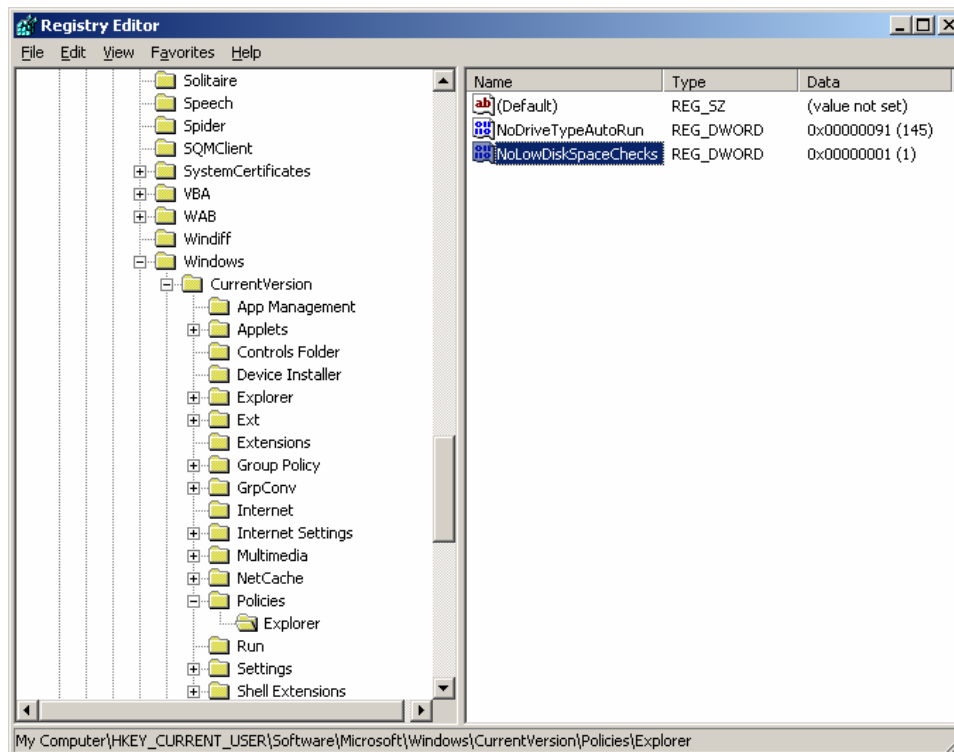


Turn Off the Low Disk Space Warning

When Windows detects that one of your hard drives has too little free space, a warning appears offering to run the "Disk Cleanup" utility. Here's how to turn off this message:


- Run the Registry Editor (REGEDIT.EXE).
- Open **HKEY_CURRENT_USER\Software\Microsoft\Windows\CurrentVersion\Policies\Explorer**.
- If it's not there, create a DWORD value and call it **NoLowDiskSpaceChecks**.

To do this right-click on the right side of the Registry Editor window. From the menu choose **New** and then **DWORD value** and enter the name in the field.

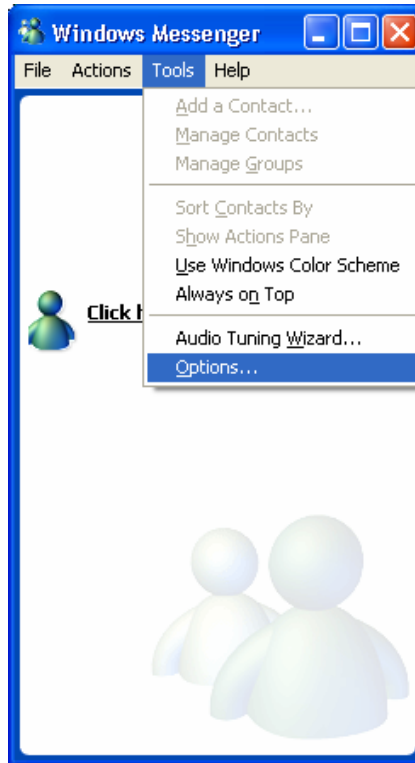


- Double-click on **NoLowDiskSpaceChecks**, and enter the value **1**, and press **OK**.

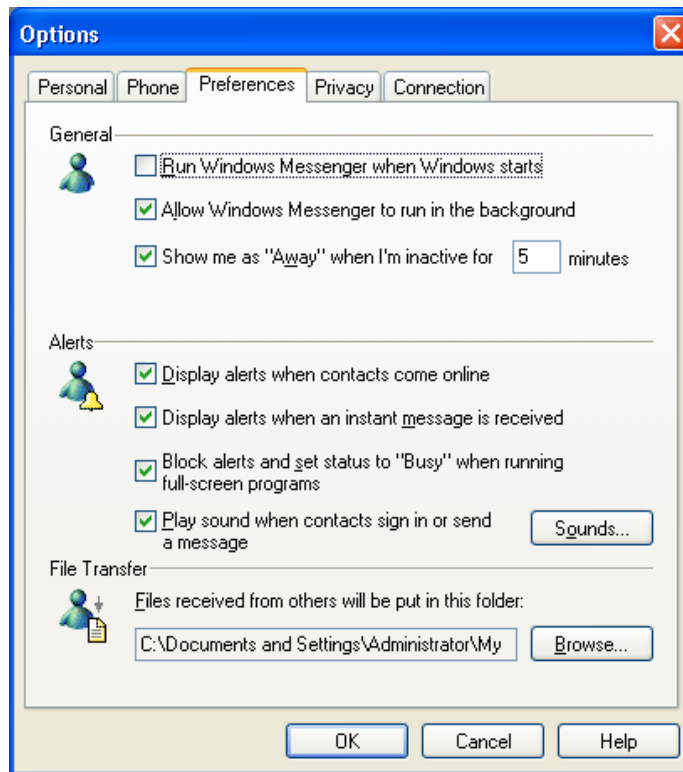
Turn off automatic run on MSN Messenger

To turn off automatic run on MSN Messenger, you must open the Windows Messenger window. To do this double-click the  icon in the system tray.

From the menu bar select **Tools** and then **Options**.



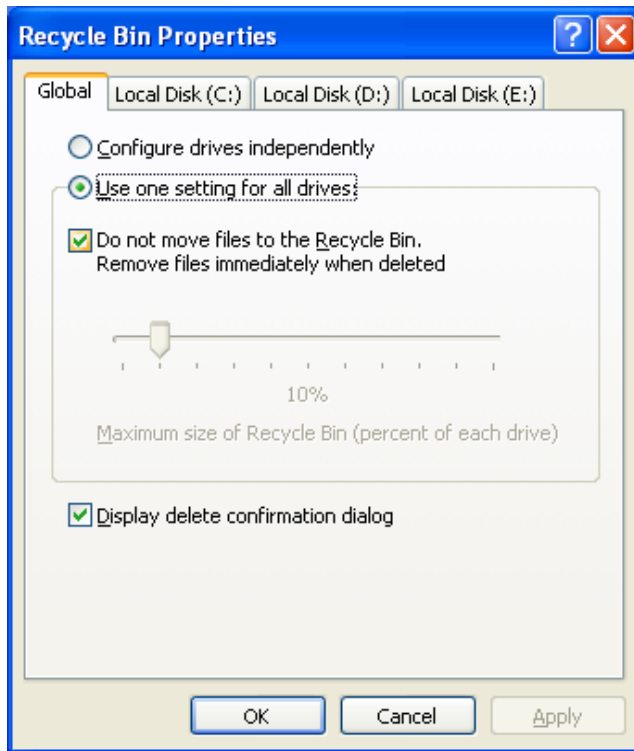
This opens the Options window. Select the **Preferences** tab. Deselect the “**Run Windows Messenger when Windows starts**” checkbox.



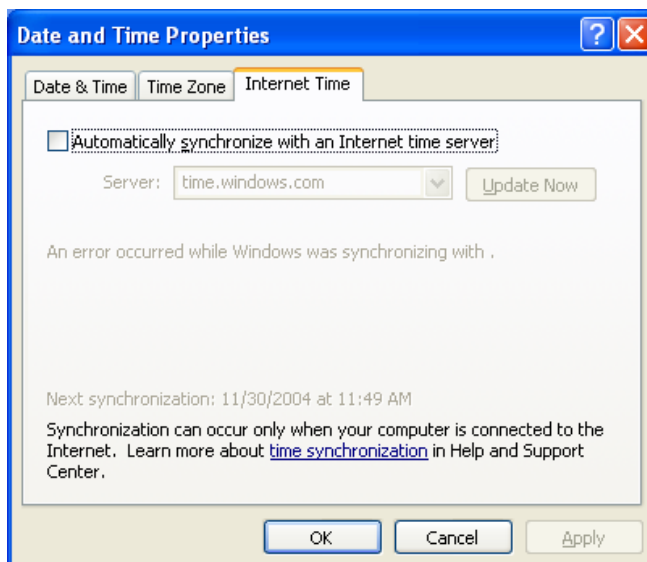
Click **OK** to save the changes and close the window. To close the Windows Messenger window click on the “x”.

Quick Step Guide for Setting up Windows 2000/ XP with TotalSecure

1. Configure the Recycle Bin
 - i) Use one setting
 - ii) Do not send files to the recycle bin

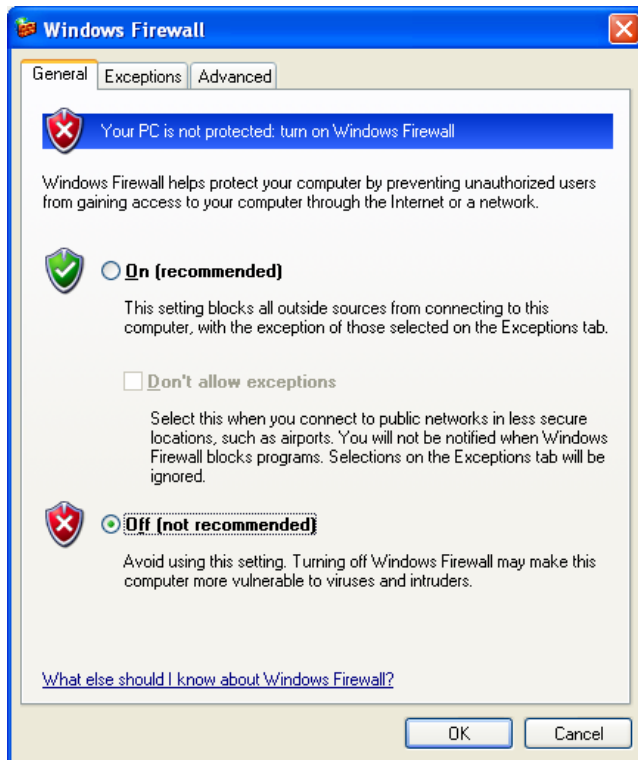


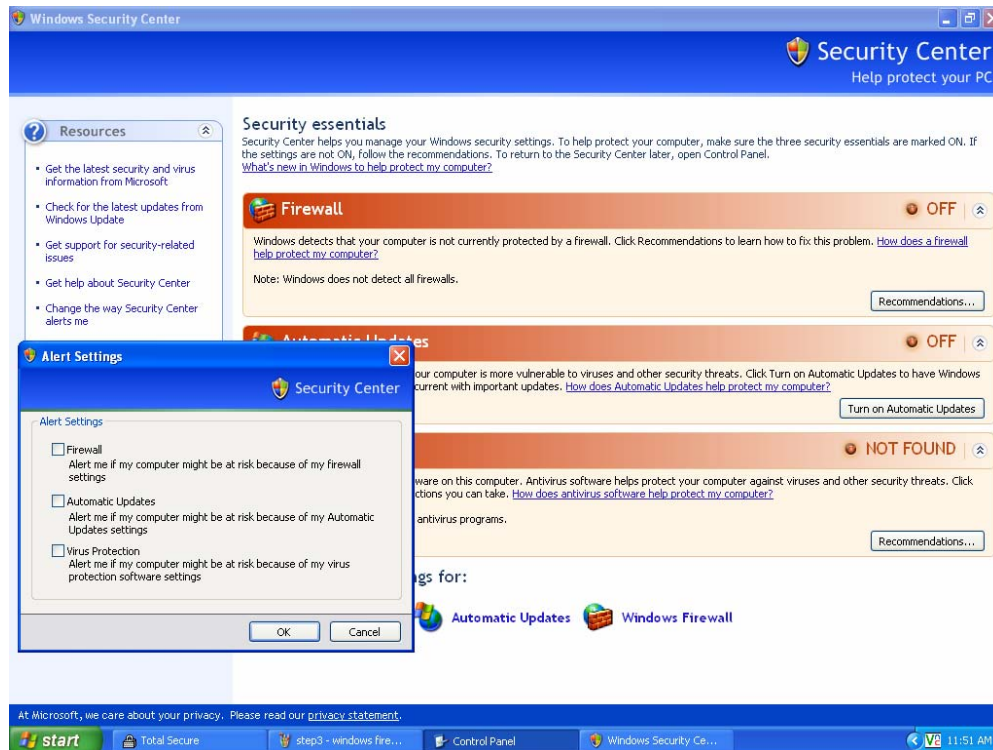
2. Date and time Settings
 - iii) Unselect 'Automatically Synchronize....'



3. Windows Firewall

- iv) For quick setup and testing, disable the Windows XP 2 Firewall. With proper setup, keep the Firewall enabled, go to Exceptions and Advanced and allow the proper ports and programs, for example, ports 5900, 6100, 6101, 6150 and 6151. Programs include TotalSecure, HSDB.exe and Netviewer.



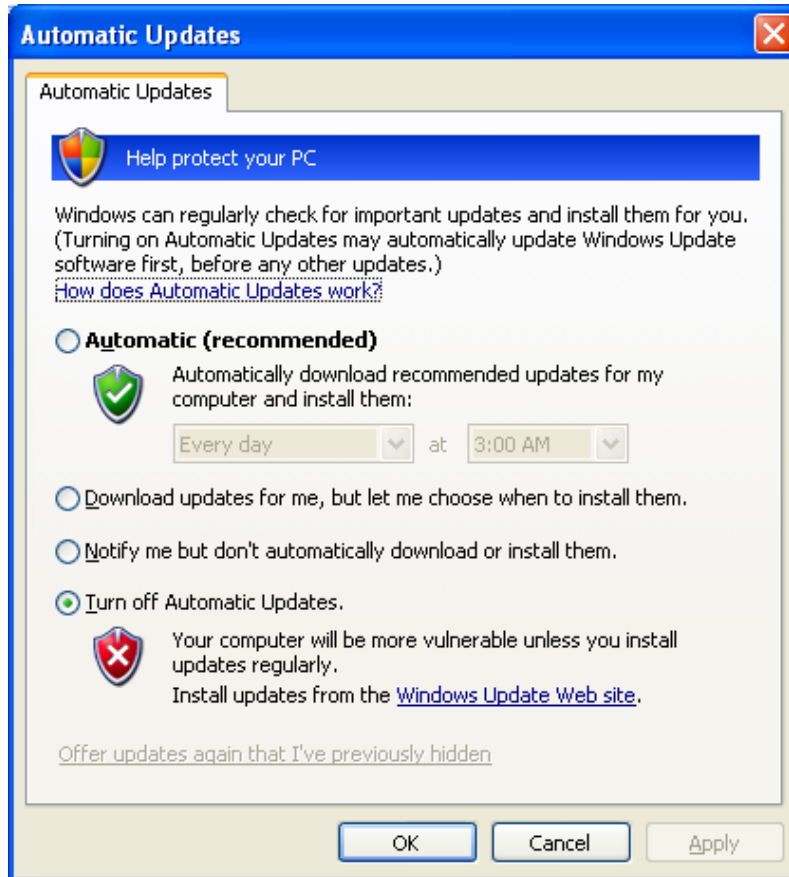


4. Security Alerts.

- v) Under Resources – Change the Way Security Centre Alerts Me
- vi) Disable the alert settings

5. Windows Auto Updates

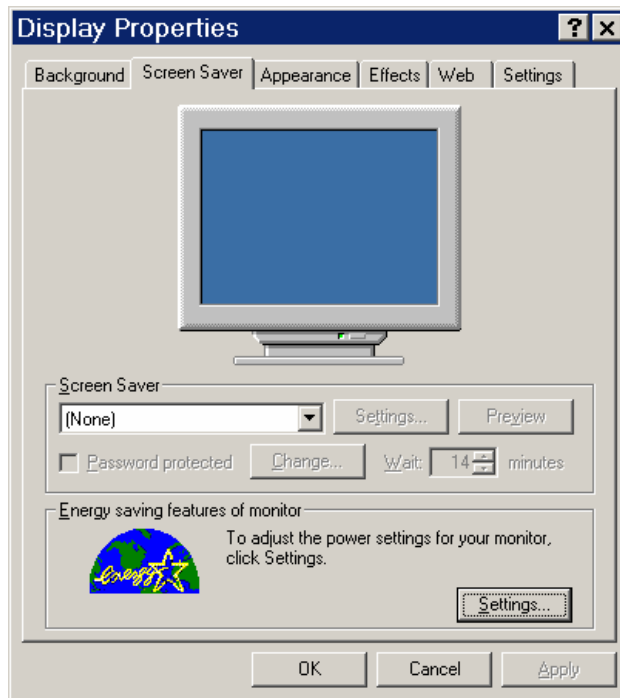
vii) Turn off Auto Updates



6. Changes to the Display Properties

viii) Right click an open area of the Windows Main Desktop display and select 'Properties'

The following window will appear.



Screen Saver Tab– Set the Screen Saver pulldown to none.

Energy monitoring features of Monitor, click *Settings*.

i) Turn **off** any and all power settings, including the monitor disabling after 20 minutes (default Windows setup).

ii) **Turn off Windows Hibernate**